

Snowflake Double Knit Pot Holder, Hot Pad or Trivet Charts and Basic Instructions



Supplies to get Started.

YARN: One skein for each color. Lily Sugar 'N Cream[®], 4-ply cotton yarn: Blue (Blueberry) and White (White) For each color, 50-54* yards of yarn is needed. * It is recommended that the yarn tension is tight for a stiffer potholder and to keep the stitches even, but if you prefer to double knit loose, allow more yardage.

Planning your own Colors: If you choice to use a striped, ombre or variegated yarn, you may want to plan out where each band of color falls in the design. To do this, measure the color bands on your skein of yarn, then estimate that 100 inches of yarn will knit 111 chart squares (or 11 chart squares per 10 inches of yarn) on US 4 sized needles. Color in and count out your design using the un-colored chart provided.

NEEDLES: US 4 (3.5 mm). 9" Needles are a tight fit, so nothing shorter.

Optional: Knitting needle stopper to prevent stitches from falling off when storing or untwisting yarn is a good idea.

G' Crochet hook (just used for making hanging loop, so any size close is fine)

Tapestry needle, yarn needle or crochet hook (for weaving the yarn ends).

GAUGE: Approximately 18 stitches and 27 rows to a 4 inch square in double knit, stockinette stitch on both sides. Finished size (before blocking) on size US 4 needle: 7-1/2" wide x 8-1/8" tall.

Abbreviations

k1 knit 1 stitch

p1 purl 1 stitch

k2tog knit 2 stitches together

p2tog purl 2 stitches together

wbyib with both yarns in back

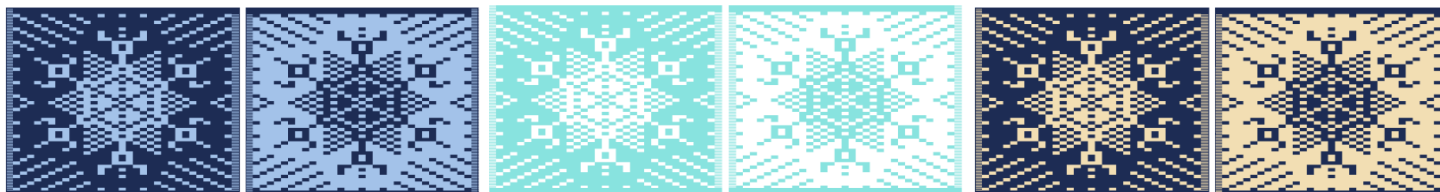
wbyif with both yarns in front

s1 slip 1 stitch from the left needle to right without working it

Snowflake Double Knit Pot Holder, Hot Pad or Trivet Charts and Basic Instructions

Copyright 2013 by Sue Gregori, www.sg-creations.org

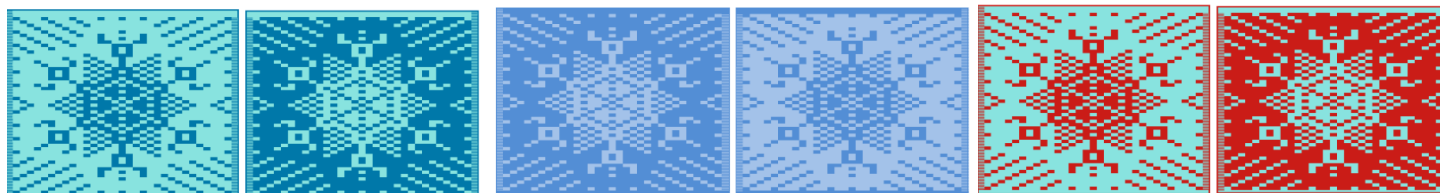
Some Color Options (Lily's Sugar'n Cream® yarn colors).



Sky Blue & Bright Navy

White & Robin's Egg

Soft Ecru & Bright Navy



Blueberry & Hot Blue

Sky Blue & Blueberry

Red & Robin's Egg

Basic Double Knitting Instructions

CAST ON: Holding 2 needles together and using a single strand of the darker yarn, make a slip knot around both needles. Then cast on 32 stitches wrapping them around 2 needles. Long tail cast-on method works well. Total stitch count 33.

ROW 1: With both yarn in back, knit the first stitch with both strands of yarn (shown on chart as striped, since it uses 2 yarns). Note: All other rows start with a slip stitch.

Following side 1 chart color and reading right to left: In every cast-on loop, k1 and p1. For the k1 stitch have both yarns in back, then k1 (chart color), but do not slip the loop off the left needle. Continuing to hold cast-on stitch on left needle, move both yarns between the needles to the front and p1 (non-chart color) into same stitch, then slide off the cast-on stitch.

Continue across the row: Wbyib, knit next chart color, wbyif, purl non-chart color.

Work across row in same manor, except last stitch (column 33, striped on chart), wbyif, p1 with both yarns, making sure not to twist the yarn as it is wrapped around the needle.

ROW 2: Wbyib, Slip the first, double yarn stitch, knit wise onto the right needle without working it (column 1, striped on chart).

Follow the side 2 chart color (read right to left), and wbyib, k1 (chart color), wbyif, p1 (non-chart color), repeat across row until the 2 yarn, edge stitch then, wbyif, p1 with both yarns.

ROWS 3-53: Odd Rows use side 1 chart and even rows use side 2 chart.

Snowflake Double Knit Pot Holder, Hot Pad or Trivet Charts and Basic Instructions

Copyright 2013 by Sue Gregori, www.sg-creations.org

Basic Double Knitting Instructions (continued)

1 COLOR: This row is part of the bind off. It is my preferred method for binding-off double knitting, is to make one row of just one color and then to bind off. If you choose to use a different bind off method, you may want to skip this row, but if you do note that the potholder hanging loop may end on the opposite side.

Wbyib, slip the first, double yarn and stitch knit wise onto the right needle without working it (striped on chart).

Using just 1 color of yarn (same as the cast on color, I prefer the darker colored yarn), k1, p1 across row. When you get to the last 2 color yarn stitch (column 33 on chart), p2tog these 2 yarns with the single yarn color.

BIND OFF: k1. Work the next 2 stitches in the following manor:

With yarn in back, s1 knit wise (the knit stitch from the previous row), onto right needle. Then s1 knit wise (the purl stitch from the previous row), onto the right needle. With yarn in back, move both stitches back onto the left needle and k2tog.

Now with 2 stitches on left needle, bind off, by carrying far right loop over the left loop and drop off the right needle (knit bind-off).

Bind-off the remaining stitches in the same manner, (s1, s1, pass back to left needle, k2tog), except for last 2 yarns.

When you get to the last stitch (striped on chart), bring both colors to front and p2tog. Bind off by bringing single yarn loop on the far right needle of the right needle over the double yarn loop and off the needle. This will leave 1 stitch of both yarn colors on needle.

With the single stitch, of both color yarns, use a 'G' Crochet hook and chain stitch 12-14, to make hanging loop. Cut yarn leaving 20" to attach loop, pull loop through to tie off and weave ends into potholder.

SHAPING: Gently stretch the potholder diagonally a few times to help even out any loose stitches. For large or stubborn gaps, pick the yarn with knitting needle tip to even out the slack through out a few stitches. Then wash or wet the pot holder and block as normal.

Tips for Even Double Knitting

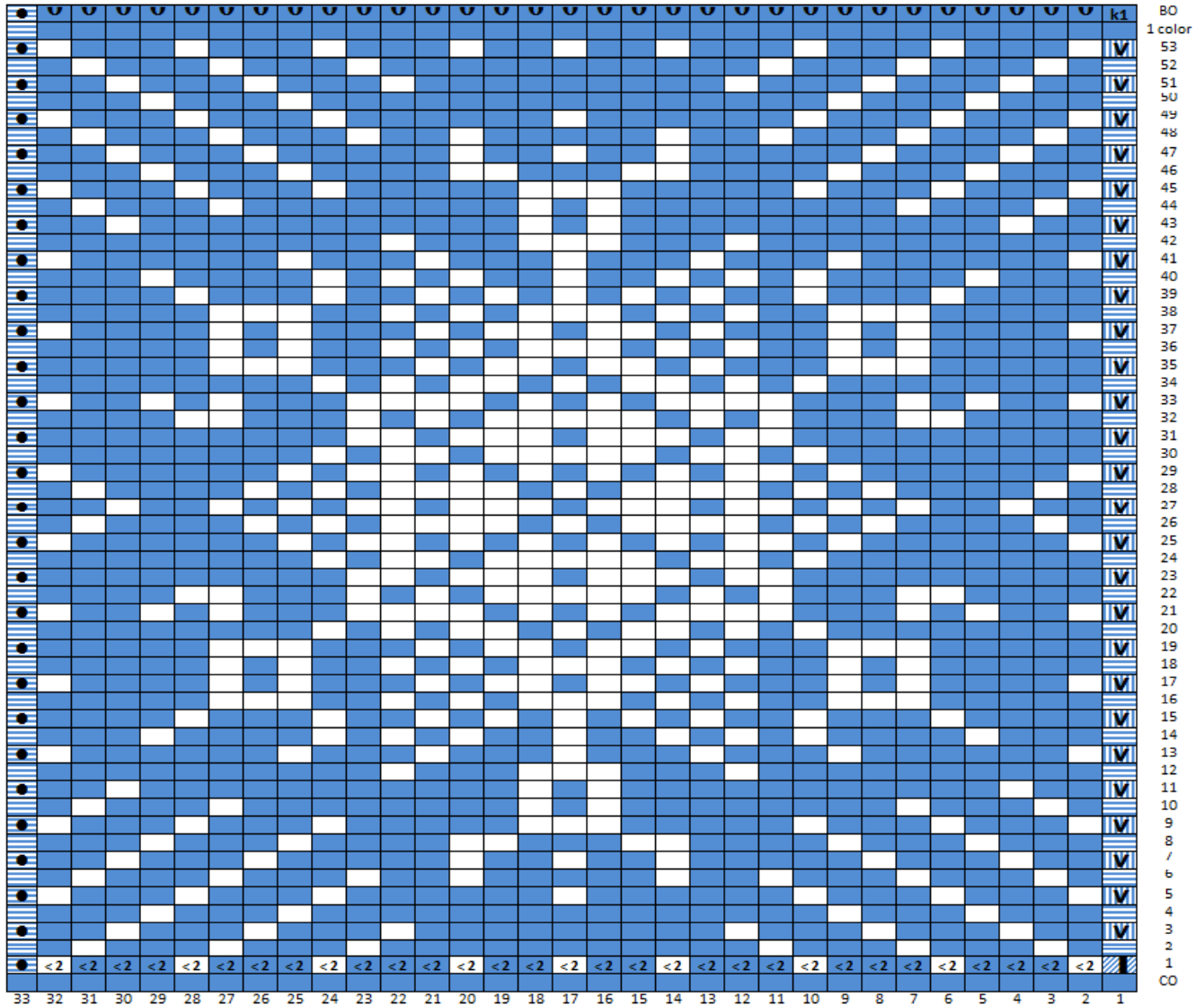
1. Control the yarn feed a tad on the tight or snug side, especially on the purl stitch. If the stitches are loose, it is more difficult to maintain stitch evenness and the potholder will be a bit more floppy.
2. Make sure the feed yarns between your index finger and work are not twisted and both have the same tension. Double knitting tends to twist the yarn or make one yarn get loose every 5-10 stitches. When this happens, drop the yarn and even out the feed so that feed evenly and both yarns are not twisted.
3. To untwist the yarn fast, put the needle stopper on the work needle. Then starting from the 2 balls of yarn, put one yarn between the index and middle finger and the other yarn between the index and ring finger. Pull the yarn from the ball side and lift the pot holder up by the yarn so it can spinout freely. Move your hand with the yarn towards the work to tighten the twist and speed up the untwisting.

Snowflake Double Knit Pot Holder, Hot Pad or Trivet

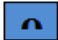



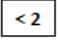
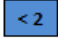






Charts and Basic Instructions

Copyright 2013 by Sue Gregori, www.sg-creations.org

Side 1- All Odd Rows, (knit right to left)



Knitting Chart Symbols

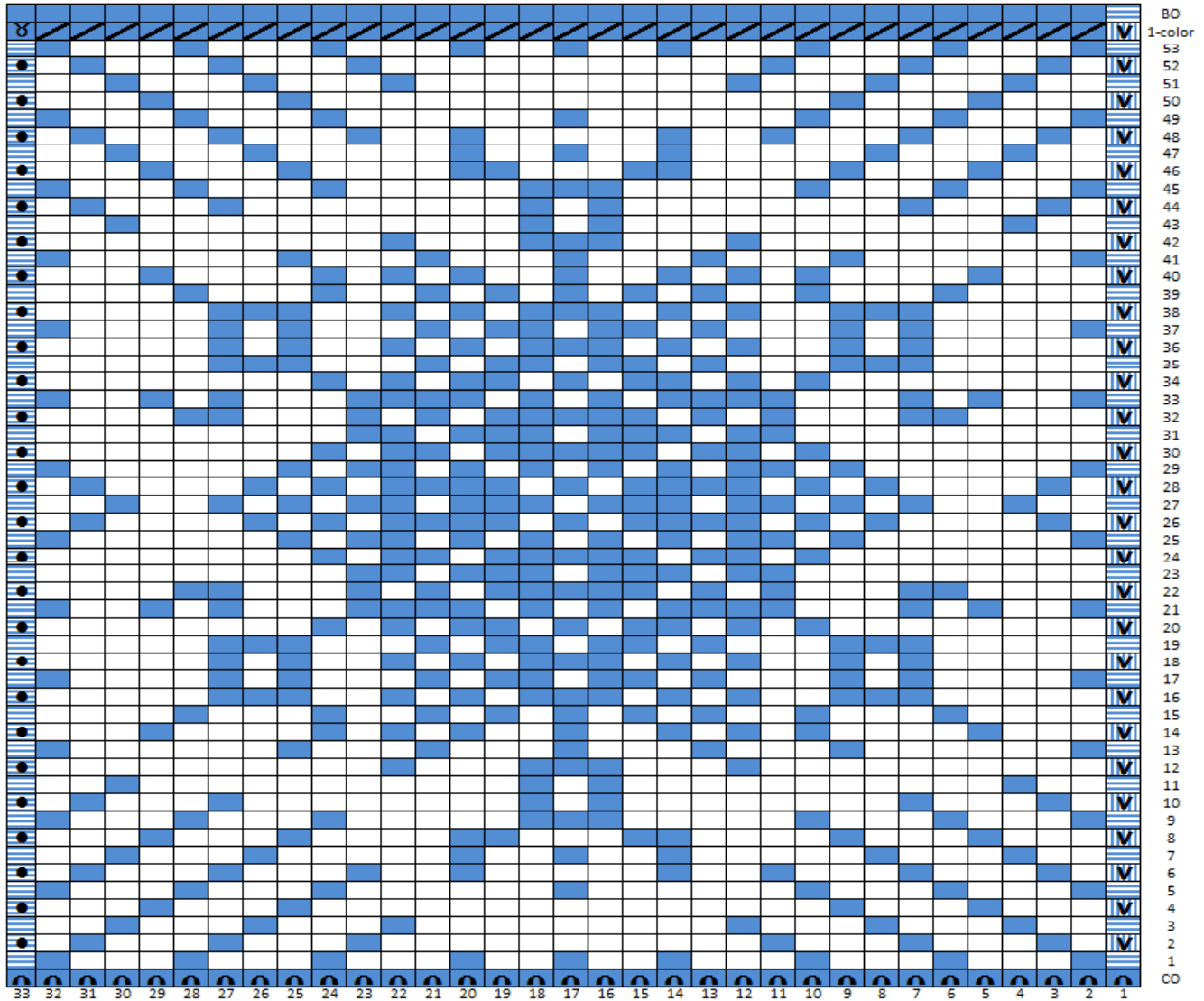
- | | | | |
|---|---|---|---|
|  | Cast on |  | WBVIB, slip both loops knit wise |
|  | WBVIB, Knit using both yarns into both loops together |  | K1, P1, both with chart color |
|  |  In 1 CO stitch, K1 chart color and P1 non-chart color |  | WBVIF, Purl using chart color yarn into both loops together |
|  |  These chart squares represent 2 stitches, K1 chart color, then P1 non-chart color |  |  Bind off, per instructions: k1, [sl, sl, pass to left, k2tog, BO] |
|  | WBVIF, Purl using both yarns into both loops together | | |

Snowflake Double Knit Pot Holder, Hot Pad or Trivet

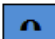



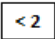


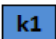


Charts and Basic Instructions

Copyright 2013 by Sue Gregori, www.sg-creations.org

Side 2- All Even Rows, (knit right to left)



Knitting Chart Symbols

- | | | | |
|---|---|---|---|
|  | Cast on |  | WBWIF, slip both loops knit wise |
|  | WBWIF, Knit using both yarns into both loops together |  | K1, P1, both with chart color |
|  | In 1 CO stitch, K1 chart color and P1 non-chart color |  | WBWIF, Purl using chart color yarn into both loops together |
|  | These chart squares represent 2 stitches, K1 chart color, then P1 non-chart color |  | Bind off, per instructions: k1, [sl, sl, pass to left, k2tog, BO] |
|  | WBWIF, Purl using both yarns into both loops together |  | |