

## Mushroom Coaster

### Free Charts and Basic Instructions



This double thick cotton coasters will protect a surface from heat (like a hot cup of coffee) and will wick moisture from a cold glass with condensation helping to prevent drips on clothes, but as it does soak up moisture it, it likely will not provide good moisture protection to surfaces like unsealed wood.

It was designed as a quick and easy intro piece into double knitting and then to help use up yarn leftovers from other projects.

Basic Double Knitting Instructions									
YARN:	Lily Sugar 'N Cream, 4-ply cotton yarn. Teal Blue (Hot Blue) and Light Teal-blue (Robin's Egg). For each color, 15 yards of yarn is needed.								
NEEDLES:	US 4 (3.5 mm). Mine needles are 9" and there is plenty of room Tapestry needle, yarn needle or crochet hook (for weaving the yarn ends).								
GAUGE:	Not too important? (it's a coaster) Finished size on size US 4 needle: 3-7/8" x 3 - 7/8"								
ABBREVIATIONS:	<table style="width: 100%; border: none;"> <tr> <td style="width: 50%;"><b>k1</b> knit 1 stitch</td> <td style="width: 50%;"><b>wbyib</b> with both yarns in back</td> </tr> <tr> <td><b>p1</b> purl 1 stitch</td> <td><b>wbyif</b> with both yarns in front</td> </tr> <tr> <td><b>k2tog</b> knit 2 stitches together</td> <td><b>s1</b> slip 1 stitch from the left needle to right without working it</td> </tr> <tr> <td><b>p2tog</b> knit 2 stitches together</td> <td></td> </tr> </table>	<b>k1</b> knit 1 stitch	<b>wbyib</b> with both yarns in back	<b>p1</b> purl 1 stitch	<b>wbyif</b> with both yarns in front	<b>k2tog</b> knit 2 stitches together	<b>s1</b> slip 1 stitch from the left needle to right without working it	<b>p2tog</b> knit 2 stitches together	
<b>k1</b> knit 1 stitch	<b>wbyib</b> with both yarns in back								
<b>p1</b> purl 1 stitch	<b>wbyif</b> with both yarns in front								
<b>k2tog</b> knit 2 stitches together	<b>s1</b> slip 1 stitch from the left needle to right without working it								
<b>p2tog</b> knit 2 stitches together									
CAST ON:	Holding 2 needles together and using a single strand of the darker yarn, make a slip knot around both needles. Then cast on 16 stitches wrapping those around 2 needles. Long tail cast-on method works well. Total stitch count 17.								
ROW 1:	<p>With both yarn in back, knit the first stitch with both strands of yarn (shown on chart as striped, since it uses 2 yarns). Note: All other rows start with a slip stitch.</p> <p>Following side 1 chart color and reading right to left: In every cast-on loop, k1 and p1. For the k1 stitch have both yarns in back, then k1 (chart color), but do not slip the loop off the left needle. Continuing to hold cast-on stitch on left needle, move both yarns between the needles to the front and p1 (non-chart color) into same stitch, then slide off the cast-on stitch.</p>								

	Continue across the row: Wbyib, knit next chart color, wbyif, purl non-cart color.
	Work across row in same manor, except last stitch (striped on chart), p1 with both yarns, making sure not to twist the yarn as it is wrapped around the needle.
ROW 2:	Wbyib, Slip the first, double yarn stitch, knit wise onto the right needle without working it (column 1, striped on chart).
	Follow the side 2 chart color (read right to left), and wbyib, k1 (chart color), wbyif, p1 (non-chart color), repeat across row until last stitch, then, wbyib, p1 with both yarns.
ROWS 3-22:	Odd Rows use side 1 chart and even rows use side 2 chart.
1 COLOR:	This row is part of the bind off. It is my preferred method for binding-off double knitting, is to make one row of just one color and then to bind off. If you choose to use a different bind off method, you may want to skip this row, but if you do note that the potholder hanging loop may end on the opposite side.
	Wbyib, slip the first, double yarn, and stitch knit wise onto the right needle without working it (striped on chart).
	Using just 1 color of yarn (same as the cast on color, I prefer the darker colored yarn), k1, p1 across row. When you get to the last 2 color yarn stitch (column 36 on chart), p2tog these 2 yarns with the single yarn color.
BIND OFF:	k1. Work the next 2 stitches in the following manor:
	With yarn in back, s1 knit wise (the knit stitch from the previous row), onto right needle. Then s1 knit wise (the purl stitch from the previous row), onto the right needle. With yarn in back, move both stitches back onto the left needle and k2tog.
	Now with 2 stitches on left needle, bind off, by carrying far right loop over the left loop and drop off the right needle (knit bind-off).
	Bind-off the remaining stitches in the same manner, (s1, s1, pass back to left needle, k2tog), except for last 2 yarns.
	When you get to the last stitch (striped on chart), bring both colors to front and p2tog. Bind off by bringing single yarn loop on the far right needle of the right needle over the double yarn loop and off the needle. This will leave 1 stitch of both yarn colors on needle, pull yarn through and weave ends into coaster.
SHAPING	Gently stretch the potholder diagonally a few times to help even out any loose stitches. Then wash and block as normal.

### Tips for Even Double Knitting

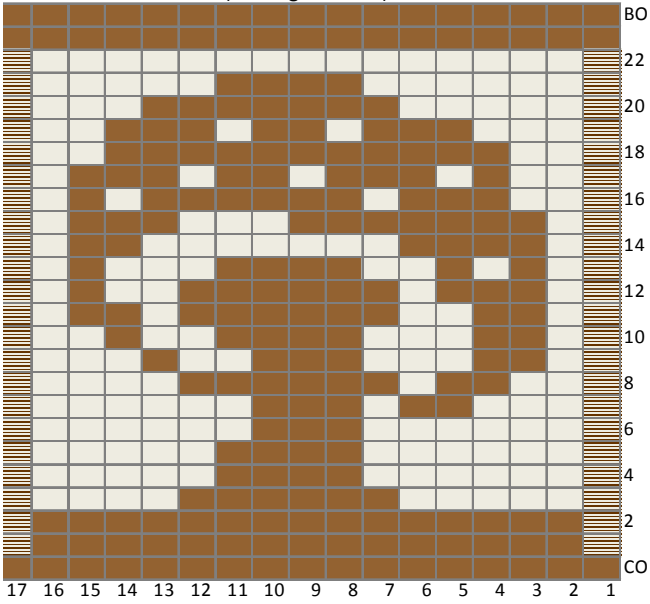
- 1) Control the yarn feed a tad on the tight or snug side, especially on the purl stitch. If the stitches are too loose, it is more difficult to maintain stitch evenness and the potholder will be a bit more floppy.
- 2) Make sure the yarns are not twisted and both have the same tension. Double knitting tends to twist the yarn or make one yarn get loose every 5-10 stitches. When this happens, drop the yarn and even out the feed so that feed evenly and both yarns are not twisted.
- 3) To untwist the yarn fast, put the needle stopper on the work. Then starting from the 2 balls of yarn, put one yarn between the index and middle finger and the other yarn between the index and ring finger. Pull the yarn from the ball side and lift the working side up so it is able to spin out freely. Move your hand with the yarn towards the work to tighten the twist and speed up the untwisting.

# Mushroom Coaster

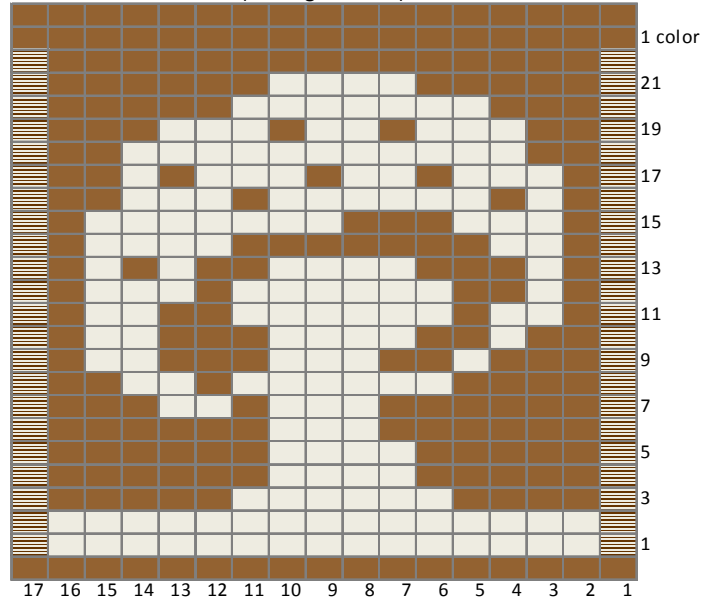
## Free Charts and Basic Instructions

Copyright 2013 by Sue Gregori, [www.sg-creations.org](http://www.sg-creations.org)

Side 2 - All Even Rows  
(Knit right to left)

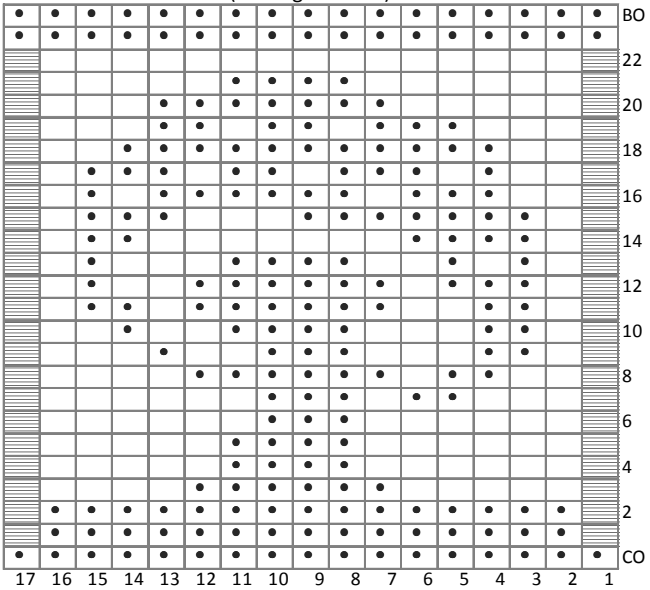


Side 1 - All Odd Rows  
(Knit right to left)



Pick your own colors and test contrast using these charts:

Side 2 - All Even Rows  
(Knit right to left)



Side 1 - All Odd Rows  
(Knit right to left)

